

USED SPARE PARTS ACCEPTANCE CRITERIA

Starter motors
A/C compressors
Electric power steering
Electric pumps
Electric steering column
Diesel Pumps and VP Pumps
Common rail injectors
Turbo chargers
Shock absorbers
Throttle valves

Alternators
Power steering
Manual steering
Hydro pumps
Drive shafts/Coupling
Injectors
EGR valves
Motors
Suspension compressors
Brake calipers

ACCEPTABLE



- ✓ Intact in all parts
- ✓ Complete with all parts
- ✓ No visible damages
- ✓ No burned parts or missing parts

NOT ACCEPTABLE



- ✗ Evident rust presence
- ✗ Blocked parts
- ✗ Burned parts
- ✗ Broken pins
- ✗ Visible breakages
- ✗ Lack of components
- ✗ Disassembled into single parts

SOME EXAMPLES

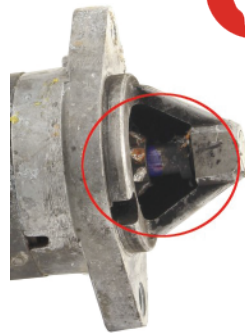
Starter motors



Alternators



**Breaking
of the starter**



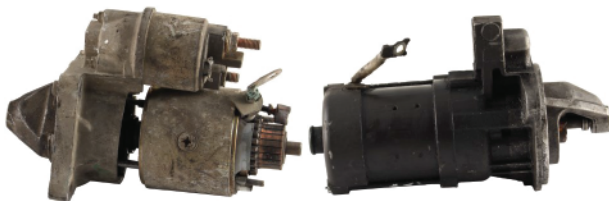
**Burning
of the starter**



**Ropture
of the body**



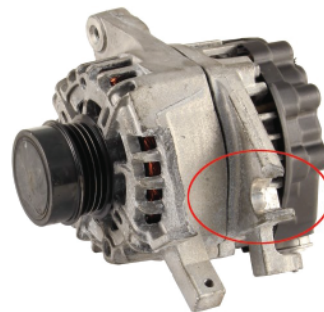
**Cracked
holder**



Dismantled



**No
solenoid**



**Broken
fixing hole**



**Damaged
rotor shaft**